

School District Name: Athol-Royalston Regional School District

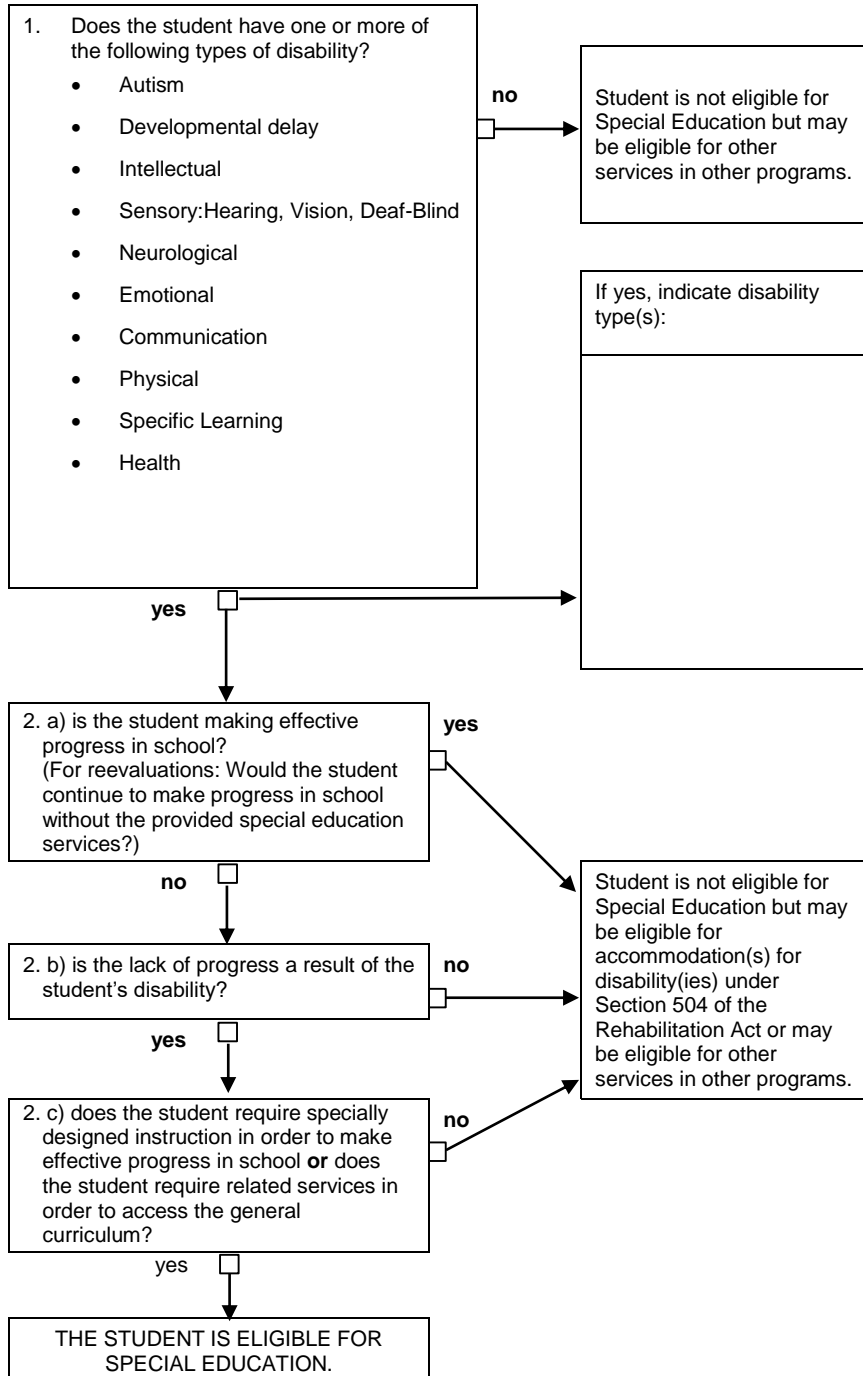
School District Address: 1062 Pleasant Street Athol, MA 01331

School District Contact Person/Phone #: Kathryn Clark, Director of Pupil Services 978-249-2403

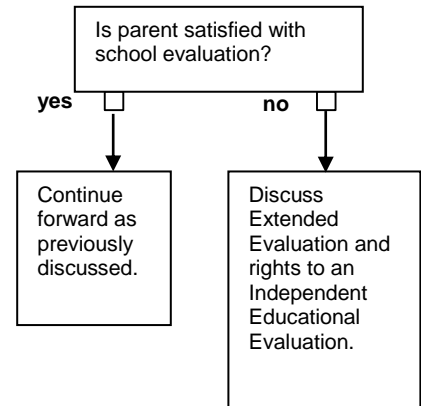
## Special Education Eligibility/Initial and Reevaluation Determination

Student Name: \_\_\_\_\_ DOB: \_\_\_\_\_ ID#: \_\_\_\_\_ Date: \_\_\_\_\_

### A. Proceed through the flowchart until an eligibility determination is reached..



### B. Answer this question for all students.



### KEY EVALUATION FINDINGS AND/OR NEXT STEPS