

School-To-Home Connection

These installation instructions are for parents and guardians who have been notified by their school that *Lexia Reading*® can be used at home. (International users will see *Lexia Reading UK*).

1. Can your computer run *Lexia Reading*?

Macintosh

- Mac OS X 10.4 or higher

Windows

- Windows XP (SP3), Vista, Windows 7

Additional System Requirements

- At least 256 MB RAM
- At least 500 MB hard drive space
- Speakers or headset (headset recommended)
- 32 MB accelerated video graphics card or better

Do you filter content on your home computer?

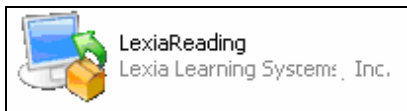
Please configure all content-filtering software, firewalls, and browsers on your home systems to allow access to *student.mylexia.com* and *update.lexialearning.com* via SSL (port 443).

2. Download *Lexia Reading* Installer

<http://www.lexialearning.com/support/lexiareading/license.html>

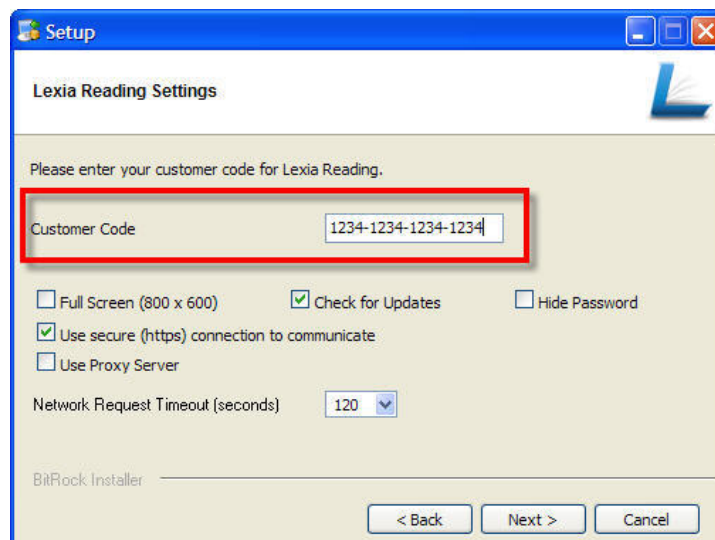
3. Install & Configure *Lexia Reading*

- a) **Windows:** Double-click the **Lexia Reading.exe** that you downloaded to your desktop.



You may receive a warning message from Windows, saying the publisher of the software is unknown. This is normal, and it is safe to click **OK** to continue with the install.

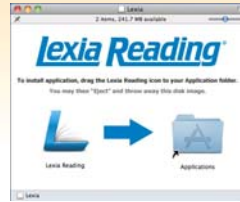
Follow the screen prompts until you get to the **Customer Code** screen. Proceed to Step C.



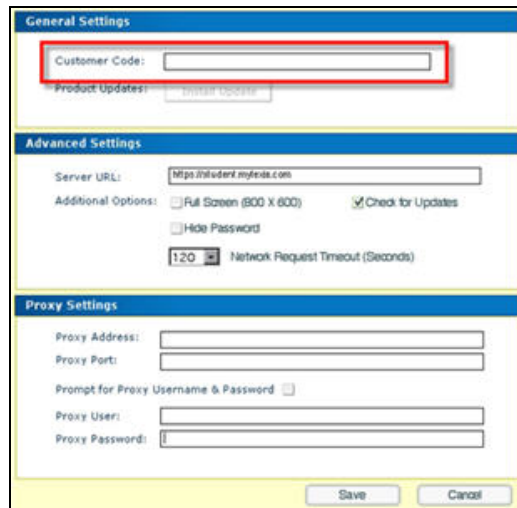
The screenshot shows the 'Setup' window for Lexia Reading. The title bar says 'Setup'. The main window title is 'Lexia Reading Settings'. Below the title bar, there is a logo for Lexia Reading. The main content area says 'Please enter your customer code for Lexia Reading.' Below this is a text box labeled 'Customer Code' containing the text '1234-1234-1234-1234'. Below the text box are several checkboxes: 'Full Screen (800 x 600)' (unchecked), 'Check for Updates' (checked), 'Hide Password' (unchecked), 'Use secure (https) connection to communicate' (checked), and 'Use Proxy Server' (unchecked). Below these is a dropdown menu for 'Network Request Timeout (seconds)' set to '120'. At the bottom, there is a 'BitRock Installer' label and three buttons: '< Back', 'Next >', and 'Cancel'.

Lexia Reading® Documentation

- b) **Macintosh:** Double-click the **Lexia** volume (or **Lexia UK**) that you downloaded. Drag and drop the Lexia icon from the left to the Applications folder on the right to install.



In the Applications folder, click the Lexia icon. The Settings screen displays.



- c) **Windows and Macintosh:** Type in the **customer code** you received from the school (include dashes).

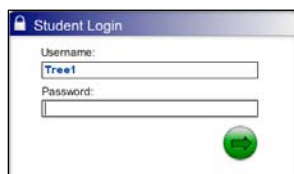
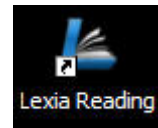
_____ - _____ - _____ - _____

No other changes are recommended. Do **not** configure any proxy settings.

- d) **Windows:** Follow the screen prompts to complete the installation.
Macintosh: Click **Save** to close the Settings screen.

4. Using the Lexia Reading Student Software

- a) Double-click the *Lexia Reading* icon on your desktop to launch the software.
b) Your child will need to type in their username and password to start.



Username: _____

Password: _____

Lexia Reading is intended for independent practice by the student with no assistance from parents or siblings. Please allow your child to work at their own pace without assistance.